

Table 4: TruSight Tumor 15 Performance With FFPE Tumor Samples

| Gene | Variant | Reference Sequence | Alternate Sequence | Depth | Frequency |
|---------------|---------|--------------------|--------------------|---------|-----------|
| <i>BRAF</i> | V600E | A | T | 38,111x | 66.3% |
| <i>AKT1</i> | E17K | C | T | 33,141x | 39.0% |
| <i>KRAS</i> | G13D | C | T | 7403x | 34.5% |
| <i>NRAS</i> | Q16R | T | C | 13,682x | 42.7% |
| <i>PIK3CA</i> | E545K | G | A | 76,822x | 49.4% |

DNA from FFPE tumor samples was extracted and then evaluated using the TruSight Tumor 15 assay and sequenced on the MiSeq System.

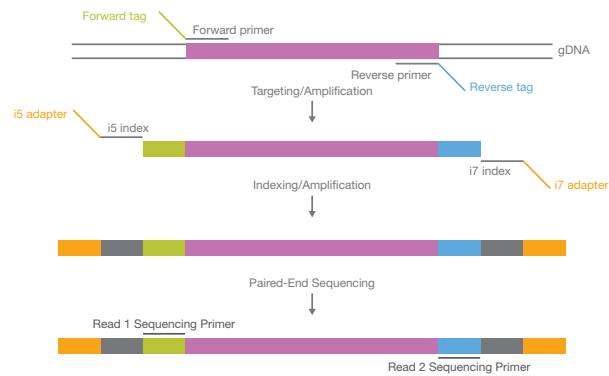


Figure 2: TruSight Tumor 15 Chemistry—The TruSight Tumor 15 assay uses a multiplex PCR approach, resulting in high accuracy and sensitivity.

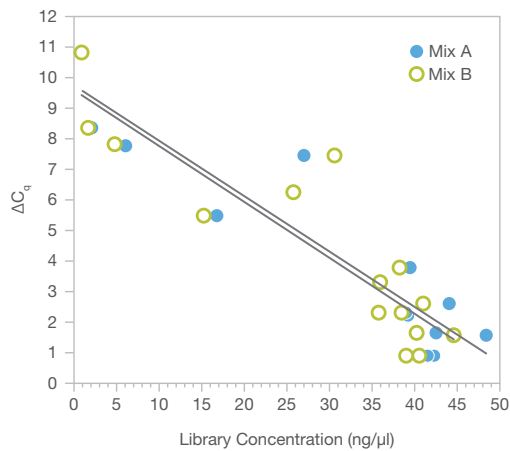


Figure 3: Concordance of Quality Metrics—The quality threshold used for TruSight Tumor 15 (20 ng/μl) is highly correlated with ΔC_q results from DNA quality evaluation using qPCR. Mix A and Mix B denote the 2 different libraries prepared per sample.

Summary

TruSight Tumor 15 offers a comprehensive workflow solution for the detection of the most common somatic variants found in solid tumors. Developed according to evidence-based guidelines, with input from key opinion leaders and late-stage pharmaceutical research, the panel enables labs to use the power of NGS technology to focus on the most relevant genes and analyze low-frequency variants from FFPE DNA with confidence. By assessing 15 genes in a single assay, this panel offers a streamlined, economical workflow solution that can be implemented easily by labs using NGS for the first time.

For Research Use Only. Not for use in diagnostic procedures.

Ordering Information

| Product | Catalog No. |
|---|-------------|
| TruSight Tumor 15 Kit Includes library preparation panel, 3 sequencing cartridges, and sequencing reagents sufficient for 24 samples | OP-101-1001 |
| TruSight Tumor 15 Includes library preparation consumables, oligos, and indexes sufficient for 24 samples | OP-101-1002 |

Learn More

For more information about Illumina technology for oncology applications, visit www.illumina.com/oncology.

References

- Wagle N, Berger MF, Davis MJ, et al. High-throughput detection of actionable genomic alterations in clinical tumor samples by targeted, massively parallel sequencing. *Cancer Discov.* 2012;2:82-93.
- NCCN Clinical Practice Guidelines in Oncology (www.nccn.org/professionals/physician_gls/f_guidelines.asp#site) Accessed 15 June 2015.
- Van Cutsem E, Cervantes A, Nordlinger B, Arnold D; ESMO Guidelines Working Group. Metastatic colorectal cancer: ESMO Clinical Practice Guidelines for diagnosis, treatment and follow-up. *Ann Oncol.* 2014;25 Suppl 3:iii1-9.
- Rousseau B, Jacquot C, Le Palabe J, et al. *TP53* transcription factor for the *NEDD9/HEF1/Cas-L* gene: potential targets in non-small cell lung cancer treatment. *Sci Rep.* 2015;5:10356.
- Haley L, Tseng LH, Zheng G, et al. Performance characteristics of next-generation sequencing in clinical mutation detection of colorectal cancers [published online July 31 2015]. *Mod Pathol.* 2015. doi: 10.1038/modpathol.2015.86.
- Salipante SJ, Kawashima T, Rosenthal C, et al. Performance and comparison of Illumina and Ion Torrent next-generation sequencing platforms for 16S rRNA-based bacterial community profiling. *Appl Environ Microbiol.* 2014;80:7583-7591.
- Van den Hoek S, Verhelst J, Vuylsteke M, Saelens X. Analysis of the genetic diversity of influenza A viruses using next-generation DNA sequencing. *BMC Genomics.* 2015;16:79.

